

Roster2

Roster2

Project Lead(s):	Adrian Fish
Project Committer(s):	Steve Swinsburg , Anthony Whyte
Project Links:	<ul style="list-style-type: none">• Confluence http://confluence.sakaiproject.org/display/RSTR/Home• Source Code https://source.sakaiproject.org/contrib/roster2/• Jira http://jira.sakaiproject.org/browse/RSTR

About

Roster2 is a replacement for the standard [Roster](#) tool that comes with Sakai. Roster2 is a lightweight tool, written using JavaScript and TrimPath.

Roster2 maintains the feature set of the standard Sakai Roster tool, with minimal differences in user interface, while providing increased integration with [Profile2](#), the new default profile tool in Sakai 2.7. Roster2 also provides several requested features and bug fixes that are currently unimplemented in the standard Sakai Roster tool.

Roster2 was developed by the [Centre for e-Science](#), Lancaster University, UK, as part of the JISC-funded [Collaborative Research in Business](#) (CRIB) project.

Lancaster University have run Roster2 in production on Sakai 2.7.x since September 2010 and on Sakai 2.8.x since July 2011.

Release

Roster2 version 1.0.0 was released on February 1st, 2012. In addition, there is a 1.0.x maintenance branch available which will receive updates.

Roster2 can be deployed as a Sakai indie project or built from source.

- [Roster2](#) repository link
- [1.0.0](#) source
- [1.0.x](#) source

Compatibility

Roster2 is known to work with Sakai 2.7.x, 2.7.1, 2.8.x, 2.9.x, and Sakai trunk.

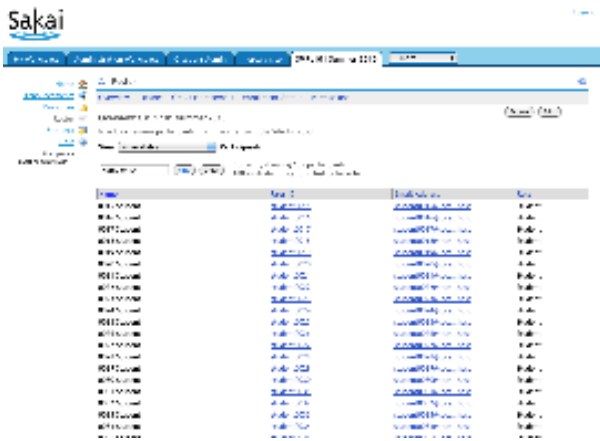
Roster2 requires Profile2 for full-functionality (Profile2 [versions](#) 1.3.x, 1.4.x and 1.5.x recommended and supported).

Preview

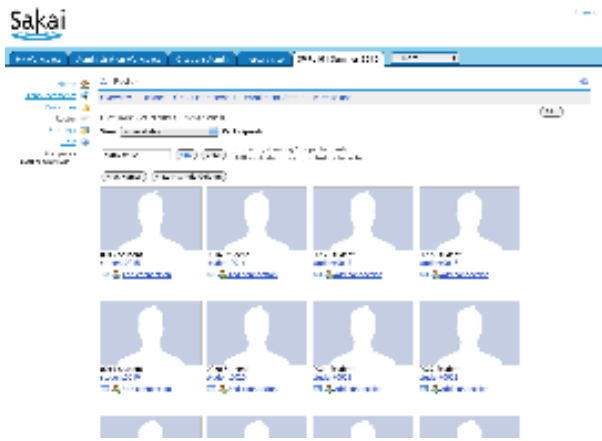
Roster2 can be previewed on the Sakai [trunk experimental server](#).

Gallery

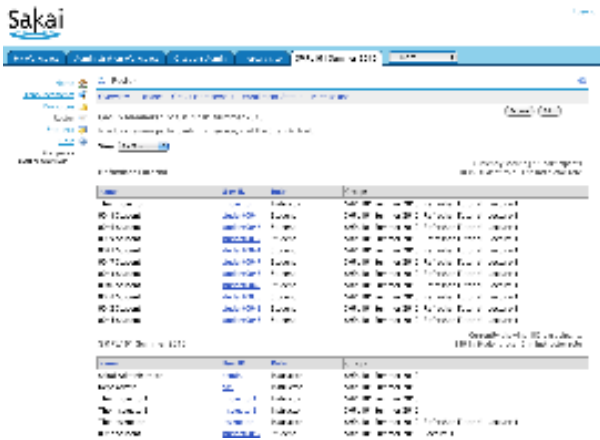
These screen captures show Roster2 in use by the Sakai Administrator user.



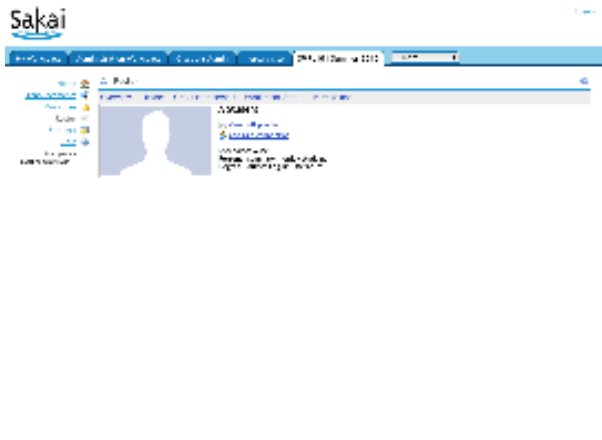
Overview



Pictures



Group Membership



View Profile

Users who have permission to administrate a particular worksite (i.e. those who have the `site.upd` permission set), are allowed to set roster permissions for all site members within the tool itself. The permissions view is shown above.

Settings

Roster2 maintains support for the standard Roster properties configured in `sakai.properties`, and includes some new ones of its own. Roster2 is configurable via the following settings in `sakai.properties`:

```

#####
# Original Roster sakai.properties #
#####

# Option to display names in the format of firstName lastName (default=false)
roster.display.firstNameLastName=true|false

# Option to show or hide the group filter if only one group or section is displayed in the roster
(default=false)
roster.display.hideSingleGroupFilter=true|false

# Option to configure the default sort column in the roster (default=sortName)
roster.defaultSortColumn=sortName|displayName|email|role

# Option to show email addresses (default=true)
roster_view_email=true|false

#####
# Additional options available in Roster2 #
#####

# Option to change the default Roster state
# 0 = Overview, 1 = Pictures, 2 = Group Membership, 3 = Enrollment Status
roster.defaultState=0|1|2|3

# Option to show user IDs (default=true)
roster.display.userDisplayId=true|false

# Set the list of roles that are visible in the tool.
# This is useful for filtering the list from helpdesk roles, for example.
# Access to the tool is not affected, ie the helpdesk user would still have access.
# If not set, all roles will be visible. Example setting below.
roster2.visibleroles.count=1
roster2.visibleroles.1=access
roster2.visibleroles.2=maintain

```

Permissions

Roster2 maintains support for the standard Roster permissions set, with the exception of the `roster.viewofficialphoto` permission (Roster2 displays whichever profile photo is provided by Profile2).

The following table shows the default permissions:

		roster.viewallmembers	roster.viewhidden	roster.viewgroup	roster.viewenrollmentstatus	roster.viewprofile	roster.export
Site							
	Instructor	Y	Y	Y	Y	Y	Y
	TA	N	N	N	N	Y	Y
	Student	N	N	N	N	Y	N
	Access	Y	N	N	N	Y	Y
	Maintain	Y	N	Y	N	Y	Y
Group							
	Instructor	N	N	N	x	x	x
	TA	Y	Y	Y	x	x	x
	Student	Y	N	Y	x	x	x
	Access	N	N	Y	x	x	x

	Main tain	N	N	N	x	x	x
	Key	x	The code does not check this permission in this scope				
		Y	The permission is granted by default				
		N	The permission is denied by default				
Permission Definitions		roster.viewallmembers	roster.viewhidden	roster.viewgroup	roster.viewenrollmentstatus	roster.viewprofile	roster.export
Site-Scoped		can view all members of a site.	can view members of a site who are otherwise not visible, having invoked a right to privacy via the Privacy Manager API. Implementation of the API is optional.	can filter on all groups and sections	has access to the Enrollment Status view. The availability of the Enrollment Status view is dependent on the appropriate implementation of the Course Management API.	can click Inks in the Overview page to individual user profiles in the Profile2 tool and view member photos or images uploaded to the Profile2 tool in the Pictures view.	can download the currently displayed data in the Overview and Enrollment Status views
Group-Scoped		limited to viewing only members of the groups and sections in which a user with the permission is also a member.	limited to viewing only members of the groups and sections (in which a user with the permission is also a member) who are otherwise not visible, having invoked a right to privacy via the Privacy Manager API. Implementation of the API is optional.	limited to filtering only on the groups and sections in which a user with the permission is also a member			